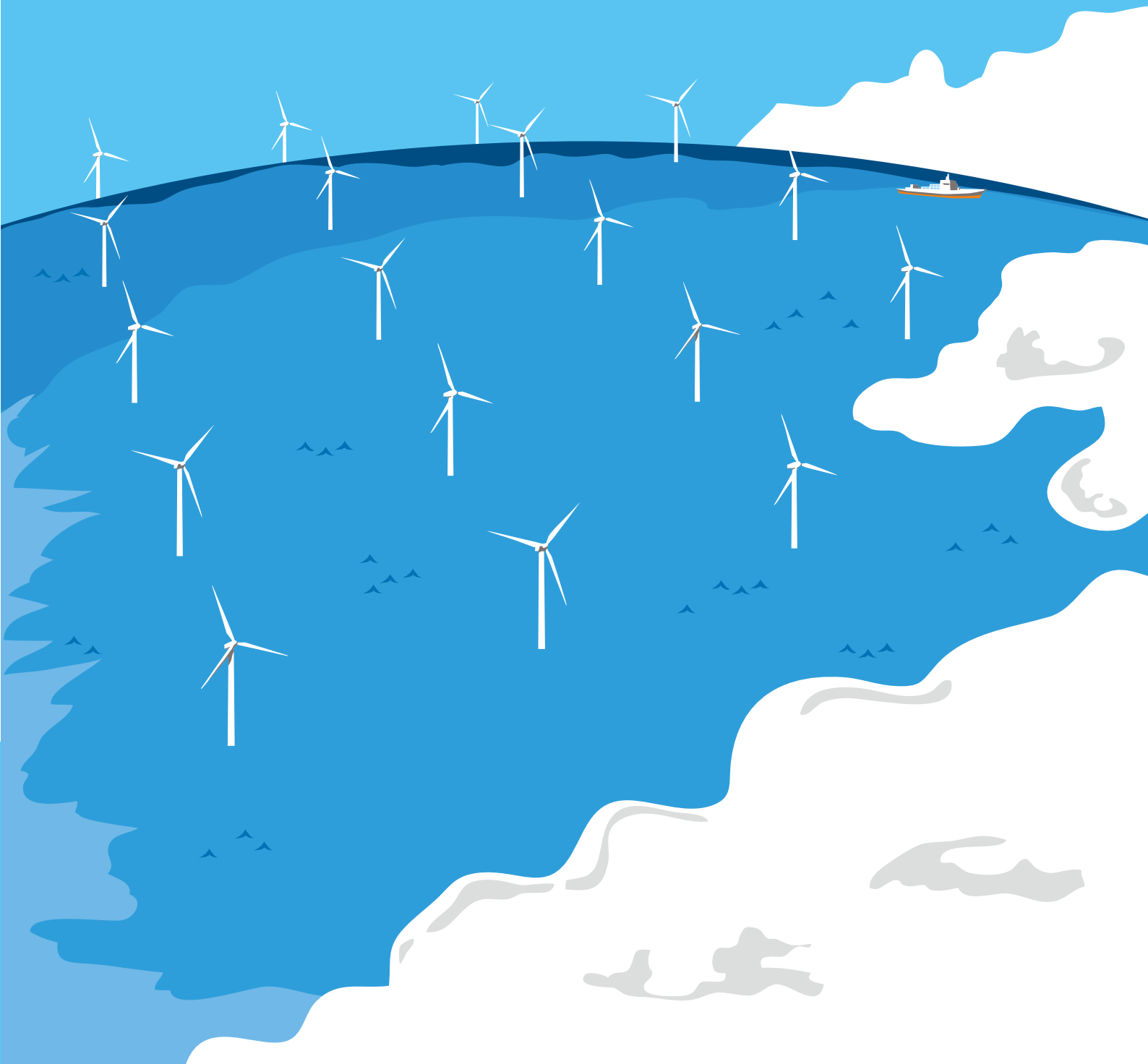


# HIBIKI WIND ENERGY

PROJECT OUTLINE



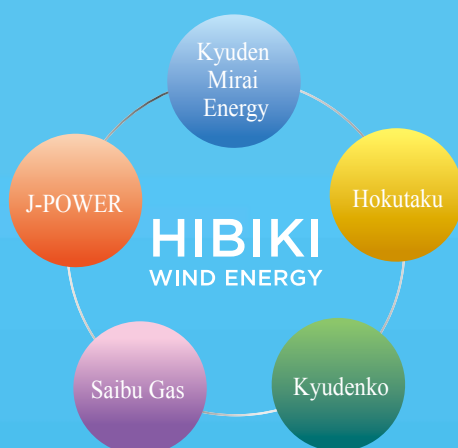
# Hibiki-nada Offshore Wind Farm Project has started

“Hibiki Wind Energy” was selected as the project developer in February 2017 through the tendering procedure for “The developer and operator of Hibiki-nada Offshore Wind Farm” announced by the City of Kitakyushu.

“Hibiki Wind Energy” was formed by Kyuden Mirai Energy, Electric Power Development (J-POWER), Hokutaku, Saibu Gas and Kyudenko. We have substantial experience in the wind farm business and a very close relationship with the City of Kitakyushu as locally-oriented companies.

The aim of this project is to construct an offshore wind farm with a maximum capacity of approx. 220,000kW. However, our aim is not limited to just construction and operation of this offshore wind farm. We would like to make a meaningful contribution to the plan of “Revitalization of the City of Kitakyushu through wind power business” promoted by the City of Kitakyushu, utilizing the Sea of Hibiki-nada which is a very valuable resource for local residents.

We would like to progress the project steadily toward realization of the offshore wind farm with regional stakeholders, and the City of Kitakyushu.



Name	Hibiki Wind Energy Co., Ltd.	Date of establishment	April 17, 2017
Location	Wakamatsu District, City of Kitakyushu	Shareholders & ratio of capital contribution	Kyuden Mirai Energy Co., Inc. 30%
Representative	Representative Director Yasuji Akiyama President of Kyuden Mirai Energy Co., Inc		Electric Power Development Co., Ltd. (J-POWER) 40%
Business Portfolio	Feasibility study work for power generation by offshore wind farm		Hokutaku Renewable Energy Service 10%
Capital	300 million yen (Paid Capital) + 300 million yen (Capital Reserve)		Saibu Gas Co., Ltd. 10%
			Kyudenko Corporation 10%

As of September 2017

## Summary of project

### Large-scale offshore wind farm to be built in Sea of Hibiki-nada

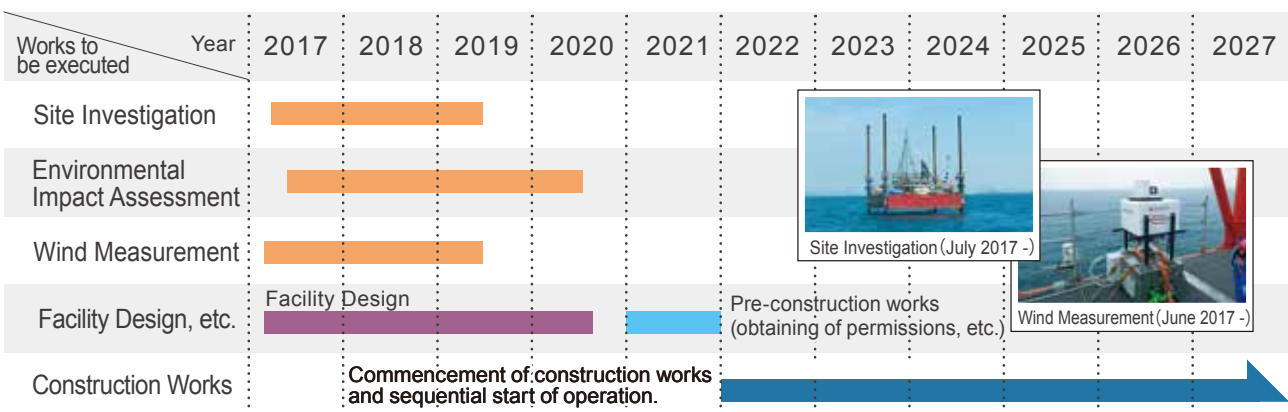
– The first tendered project under the revised Laws of Port Management in Japan –

This project is the first tendered project in accordance with the Law of Port Management, revised in July 2016, and approx. 2,700ha in the Kitakyushu port zone has been designated as the project site. Wind measurement, site investigation, and environmental impact assessment have been commenced, and final detailed project planning is expected to be complete in March 2021.

Our aim is to prepare the most favorable business plan which will be beneficial for regional stakeholders while giving them peace of mind, with the best wind farm layout, considering the seaweed bed and fishery reef.



## Project Schedule



Note: The above project schedule is as of September 2017

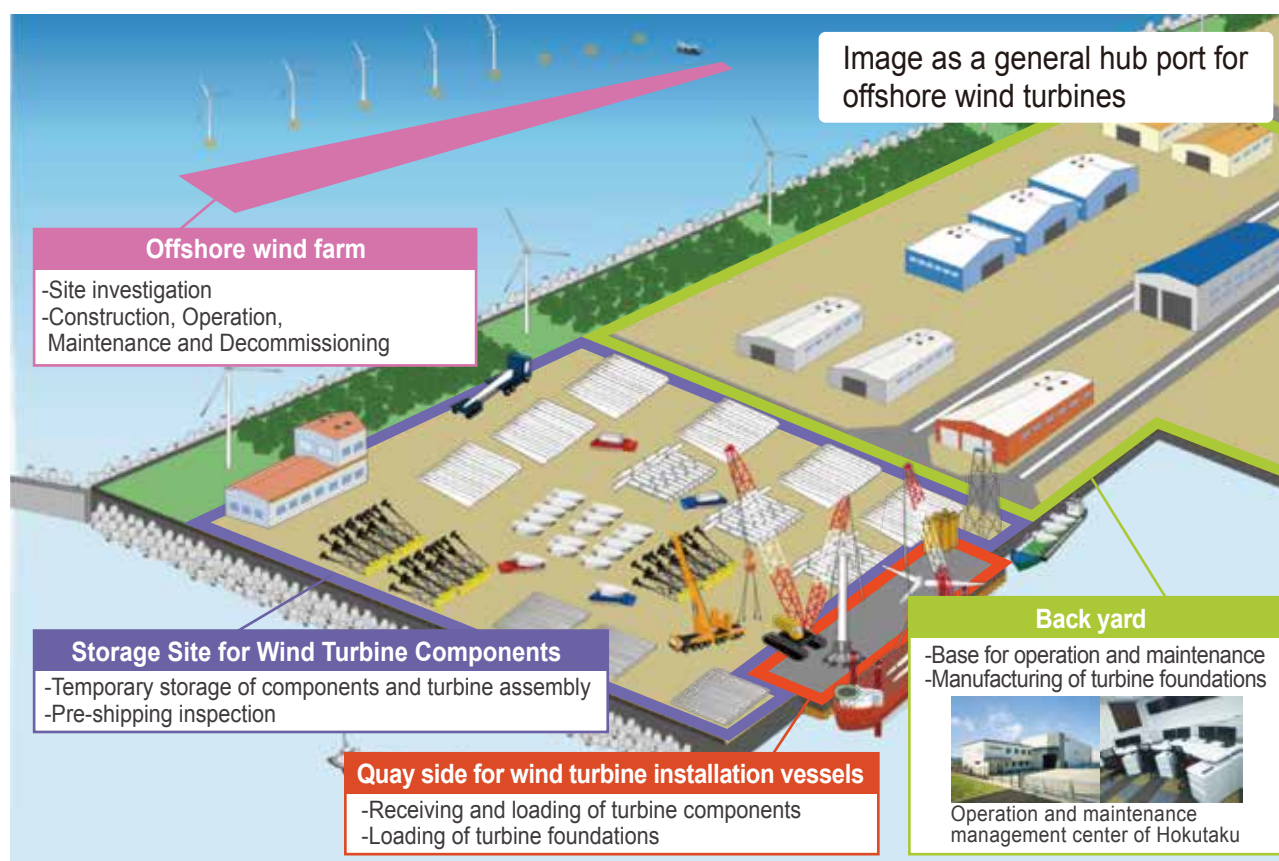
## Hibiki-nada could be a world-leading wind power industrial town

In addition to the construction of an offshore wind farm in the City of Kitakyushu port area, we would like to contribute to regional development through the realization of the “Green Energy Port Hibiki” project promoted by the City of Kitakyushu since 2010.

As a part of such activity, Hokutaku Co., Ltd, a member of our consortium, has opened an operation and maintenance center, focused on future offshore wind farm operation.

In order to make the Hibiki-nada region an international hub port, we will utilize the existing port infrastructure for loading of turbines and components.

We are aiming to create a project which regional stakeholders will be pleased to have in their region, based on a spirit of working and growing together with the region.



Source of information:

“Guidebook for Green Energy Port Hibiki” published by the City of Kitakyushu with some modification and addition made by our company

Inquiries

**Hibiki Wind Energy Co., Ltd.**

2-4-8 Watanabe-dori, Chuo-ku, Fukuoka, 810-0004 Japan  
Phone: +81-92-983-5873

Hibiki Wind Energy

Search

<http://hibikiwindenergy.co.jp/>